



Setting Up Your Team-SQL Database for MS SQL Server 2000

Once you have your SQL Server in place, and have the SQL client software installed on all Team Client PCs, you are ready to set up your Team-SQL database.

The following basic steps are required for setting up your SQL Server and SQL Database.

- Install/Configure Microsoft SQL Server,
- Create the SQL Database,
- Create the SQL Database Login for Team,
- Set Access and Permissions for the Database,
- Test Your Connection Using the Query Analyzer,
- Connect Team to Your SQL Database,
- Upload Your Existing Team Database to SQL,
- Test Your Connection to Team-SQL, and
- Make SQL the Active Database.

Install/Configure Microsoft SQL Server 2000

Install Microsoft SQL Server 2000 on your server.

Prior to running Team with SQL 2000, you must make sure that the MS SQL 2000 Client software is installed on all client PCs that will be running Team-SQL for SQL 2000 and that you have the proper SQL licensing.

Once the SQL Server is installed, use the Windows Start menu to select and start the **SQL Server Enterprise Manager** from the **Microsoft SQL Server** program group to set up your SQL database.

Create the SQL Database

To create your SQL Database:

1. Expand your **MS Server Tree** to **Databases** on your server.
2. Right-click on **Databases** and select **New Database**.
3. In the **General Tab**, enter your **database name** (ie. teamlog).
4. Select the **Data Files** tab.
5. Enter an **initial database size** = 100 MB.
6. Select **OK** to create your database.

** you can use the defaults for all other settings when creating the database **

Create the SQL Database Login for Team

To create the SQL Database login for Team:

1. Select the **Security** folder from the **SQL Server tree**
2. Right-click on **Logins**.
3. Select **New Login...**

4. In the **General Tab**, create a new login with:

Name = team (lowercase)
SQL Server Authentication = checked
Password = team
Database = teamlog
Language = (default)

5. Select **OK** to create the login.

Set Access and Permissions for the Database

To set proper access and permissions for the database:

1. Select the **Database Access** tab.
2. Select the **teamlog** database (check this database).
3. Select **OK**.
4. Enter your **password** (i.e. team).
5. Select the **Database** folder from the **SQL Server tree**.
6. Right-click on **teamlog** database and select **Properties**.
7. Select the **Permissions Tab**.
8. Select permissions for the team login as follows:

Create table
Create view
Create SP
Create Default
Create Rule
Create Function
Backup DB
Backup Log

9. Select **OK**.

Test Your Connection Using the Query Analyzer

Test your connection using the Windows Start menu to select and start the **Query Analyzer** from the **Microsoft SQL Server** program group.

Once the program is started:

1. Select your **server**.
2. Select **Use SQL Server authentication**.
3. Enter the **Login Name: team**.

4. Enter the **Password** : team.

5. Select **OK**.

6. Once the connection is established, test it by entering the following command in the **Query Tab**:

```
select @@version
```


7. Select the **Execute Query** button (green arrow) and if you see information similar to:

```
Microsoft SQL Server 2000 - 8.00.194 (Intel X86)
Aug 6 2000 00:57:48
Copyright (c) 1988-2000 Microsoft Corporation
Standard Edition on Windows NT 5.0 (Build 2195: Service Pack 1)
```

Your connection is good.

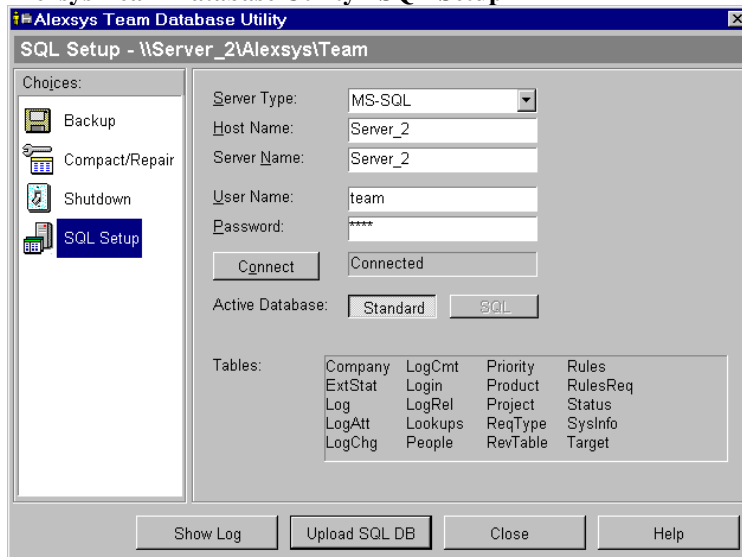
Connect Team To Your SQL Database

To connect Team to your SQL Database:

1. Select **Admin | Database Utility** from the TeamView or Work Request menus or start  **TEAM Database Utility** from the Alexsys Team Program Group to open the **Alexsys Team Database Utility**. Remember to log off of Team after you open the Database Utility.

2. Select the **SQL Setup** category from the Alexsys Team Database Utility window (see figure below).

Alexsys Team Database Utility - SQL Setup



3. Select the **Server Type** (i.e. MS-SQL).

4. Enter the **Host Name** (i.e. Server_2).

5. Enter the **Server Name** (i.e. Server_2).

6. Enter the **User Name** (i.e. team in lowercase).

7. Enter the **Password**.


8. Select the **Connect** button.

If Team can connect to your SQL database on the SQL server, **Connected** will be displayed in the area next to the Connect button.

Upload Your Existing Team Database to SQL

When you are ready to run Team using your SQL database, you must connect Team to the SQL server and upload your database to SQL. Once this is done and you do one final test to check your connection to SQL using Team, you can force all users to run Team-SQL by switching the active database to SQL.

To connect to the SQL database and upload your existing data:


1. Select **Admin | Database Utility** from the TeamView or Work Request menus or start  **TEAM Database Utility** from the Alexsys Team Program Group to open the **Alexsys Team Database Utility**. Remember to log off of Team after you open the Database Utility.
2. Select the **SQL Setup** category from the Alexsys Team Database Utility window.
3. Select the **Connect** button.
4. Once connected, select the **Upload to SQL** button to upload your existing standard Team database to your SQL database.

Tip	You must be running with the Standard database as the active database in order to upload your database to SQL. You do not want to make SQL your active database at this time.
------------	--

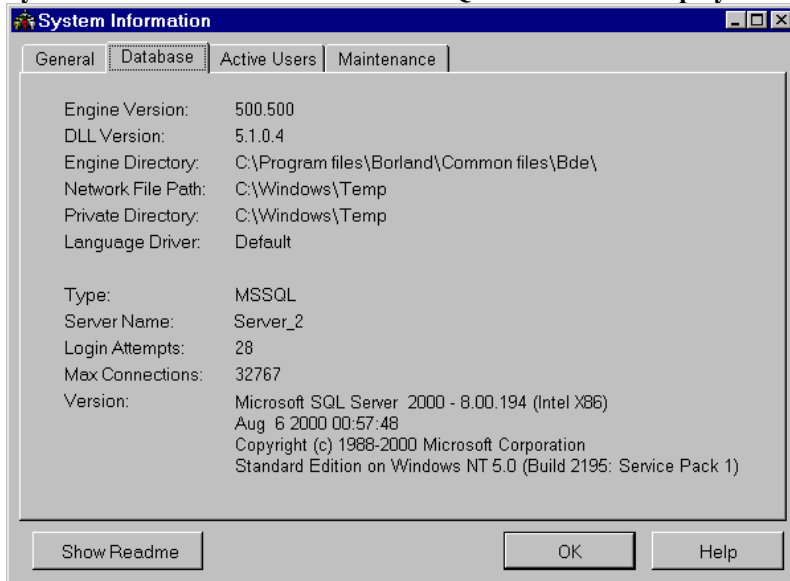
5. Once uploaded, select **Cancel** to close the Alexsys Team Database Utility.

Test Your Connection to Team-SQL

Once you have uploaded your SQL database using the SQL Setup Utility, you can perform another test using Team without forcing all users to run SQL:

1. Alter the  **Team** shortcut on your desktop by adding an /SQL parameter to the Target in the shortcut properties. (i.e. "C:\Program Files\Alexsys\Team\Team.exe" /SQL)
2. Start Team.
3. Verify that Team is accessing the SQL database by selecting **Help | System Information** from the TeamView menu and selecting the **Database Tab** (see figure below). You should see information for the SQL server you are accessing.


System Information - Database Tab - SQL Information Displayed



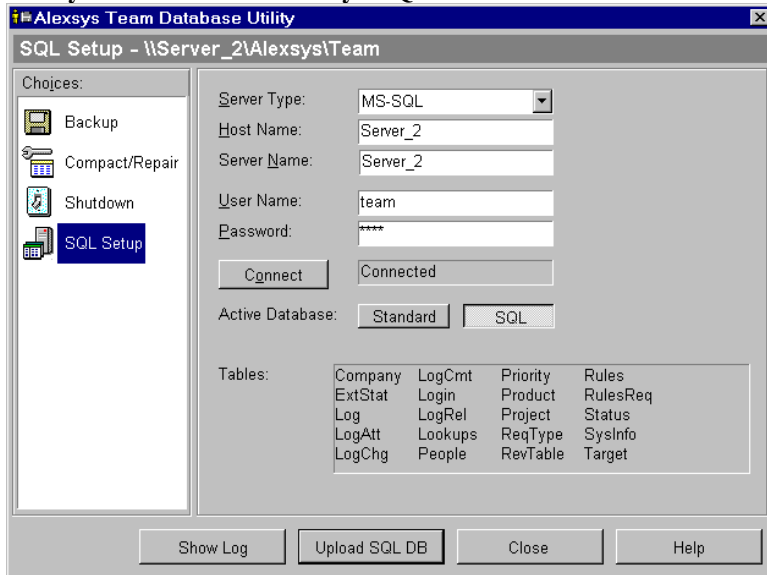
Make SQL the Active Database

Once your database has been uploaded to your SQL database and you have tested your connection to your SQL database using Team-SQL, you can make SQL the active database to force all users to use Team-SQL.

To make SQL the active database:

1. Select **Admin | Database Utility** from the TeamView or Work Request menus or start  **TEAM Database Utility** from the Alexsys Team Program Group to open the **Alexsys Team Database Utility**. Remember to log off of Team after you open the Database Utility.
2. Select the **SQL Setup** category from the Alexsys Team Database Utility window.
3. Connect to the SQL database by selecting the **Connect** button.
4. Once connected, select **SQL** as the **Active Database** (see figure below).

Alexsys Team Database Utility - SQL Active Database



5. Select **Close** to close the Alexsys Team Database Utility.

6. Since SQL is now the active database, you can remove the /SQL argument from any Team shortcuts.