



## Setting Up Your Team-SQL Database for SQL 7.0

Once you have your SQL Server in place, and have the SQL client software installed on all Team Client PCs, you are ready to set up your Team-SQL database.

The following basic steps are required for setting up your SQL Server and SQL Database.

- Install/Configure Microsoft SQL Server,
- Register Your SQL Server,
- Create the SQL Database,
- Create the SQL Database Login for Team,
- Set Access and Permissions for the Database,
- Test Your Connection Using the Query Analyzer,
- Connect Team to Your SQL Database,
- Upload Your Existing Team Database to SQL,
- Test Your Connection to Team-SQL, and
- Make SQL the Active Database.

### Install/Configure Microsoft SQL Server v7.0

Install Microsoft SQL Server v7.0 on to a server running Windows NT 4.0 Service Pack 4 or later.

Prior to running Team with SQL 7.0, you must make sure that the MS SQL 7.0 Client software is installed on all client PCs that will be running Team-SQL for SQL 7.0.

Once the SQL Server is installed, use the Windows Start menu to select and start the **SQL Enterprise Manager** from the **Microsoft SQL Server 7.0** program group to set up your SQL database.

### Register Your SQL Server

To register your SQL Server:

1. Click on your **Server Group** to open the **Getting Started Taskpad**.
2. Select **Administer SQL Server**.
3. Select **Register a Server**, then use the **Wizard** to:
  - a.) Enter your **Server Name** and select **Add>** .
  - b.) Select the appropriate **Authentication Mode** (use the default).
  - c.) Select the **Server Group** you want to register your server in.

### Create the SQL Database

To create your SQL Database Device:

1. Select **Create a Database** from the **Administer SQL Server Taskpad**.
2. Using the **Wizard**, create the database with:

**database name** = teamlog (in lowercase).

**initial database size** = 100 MB

\*\* you can use the defaults for all other settings when creating the database \*\*

## Create the SQL Database Login for Team

To create the SQL Database login for Team:

1. From the left browser panel, select the **server**.
2. Select the **Security** folder.
3. Right-click on **Logins**.
4. Select **New Login...**
5. From the **General Tab**, create a new login with:
  - Name** = team (lowercase)
  - SQL Server Authentication** = checked
  - Password** = team
  - Database** = teamlog
  - Language** = (default)
6. Select **OK**.

## Set Access and Permissions for the Database

To set proper access and permissions for the database:

1. From the left browser panel, select the **Security** folder, then:
  - a.) Select **Logins**.
  - b.) Right-click on the **team** login and select **Properties**.
  - c.) Select the **Database Access Tab**.
  - d.) Select the **teamlog** database, then select **public** for the access.
2. From the left browser panel, select the **Databases** folder, then:
  - a.) Right-click on the **teamlog** database and select **Properties**.
  - b.) Select the **Permissions Tab**.
  - c.) Select all the **permissions** for the **team** login as follows:
    - Create table**
    - Create view**
    - Create SP**
    - Create Default**
    - Create Rule**
    - Backup DB**
    - Backup Log**
  - d.) Select the **Options Tab**, then set the following **Settings**:
    - Truncate log on checkpoint**
    - Auto create statistics**
    - Auto update statistics**

3. Select **OK**.

## Test Your Connection Using the Query Analyzer

Test your connection using the Windows Start menu to select and start the **Query Analyzer** from the **Microsoft SQL Server 7.0** program group.

Once the program is started:

1. Select your **server**.
2. Select **Use SQL Server authentication**.
3. Enter the **Login Name: team**.
4. Enter the **Password : team**.
5. Select **OK**.
6. Once the connection is established, test it by entering the following command in the Query Tab:

**select @@version**


4. Select the **Execute Query** button (green arrow) and if you see information similar to:

```
Microsoft SQL Server 7.00 - 7.00.623 (Intel X86)
Nov 27 1998 22:20:07
Copyright (c) 1988-1998 Microsoft Corporation
Standard Edition in Windows NT 4.0 (Build 1381: Service Pack 4)
```

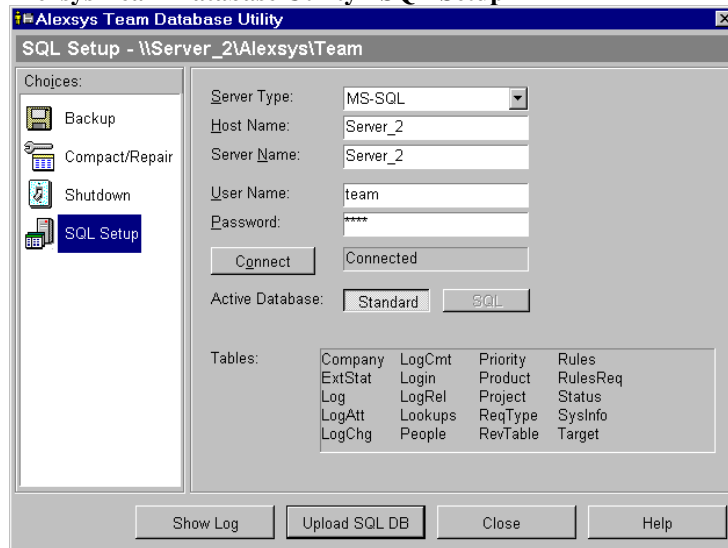
Your connection is good.

## Connect Team To Your SQL Database

To connect Team to your SQL Database:

1. Select **Admin | Database Utility** from the TeamView or Work Request menus or start  **TEAM Database Utility** from the Alexsys Team Program Group to open the **Alexsys Team Database Utility**. Remember to log off of Team after you open the Database Utility.
2. Select the **SQL Setup** category from the Alexsys Team Database Utility window (see figure below).

## Alexsys Team Database Utility - SQL Setup




3. Select the **Server Type** (i.e. MS-SQL).
4. Enter the **Host Name** (i.e. Server\_2).
5. Enter the **Server Name** (i.e. Server\_2).
6. Enter the **User Name** (i.e. team in lowercase).
7. Enter the **Password**.
8. Select the **Connect** button.

If Team can connect to your SQL database on the SQL server, **Connected** will be displayed in the area next to the Connect button.

## Upload Your Existing Team Database to SQL

When you are ready to run Team using your SQL database, you must connect Team to the SQL server and upload your database to SQL. Once this is done and you do one final test to check your connection to SQL using Team, you can force all users to run Team-SQL by switching the active database to SQL.

To connect to the SQL database and upload your existing data:

1. Select **Admin | Database Utility** from the TeamView or Work Request menus or start  **TEAM Database Utility** from the Alexsys Team Program Group to open the **Alexsys Team Database Utility**. Remember to log off of Team after you open the Database Utility.
2. Select the **SQL Setup** category from the Alexsys Team Database Utility window.
3. Select the **Connect** button.
4. Once connected, select the **Upload to SQL** button to upload your existing standard Team database to your SQL database.


<b>Tip</b>	You must be running with the <b>Standard</b> database as the active database in order to upload your database to SQL. You do not want to make SQL your
------------	--

active database at this time.

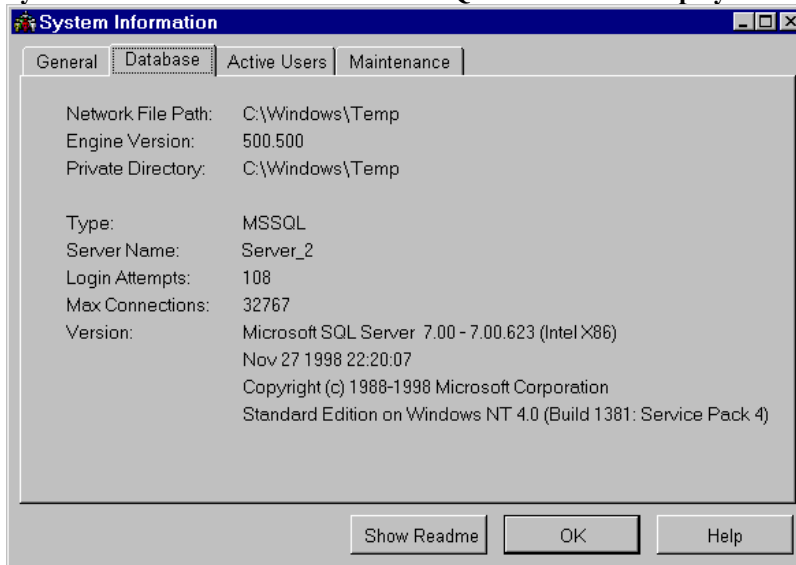
5. Once uploaded, select **Cancel** to close the Alexsys Team Database Utility.

## Test Your Connection to Team-SQL

Once you have uploaded your SQL database using the SQL Setup Utility, you can perform another test using Team without forcing all users to run SQL:

1. Alter the  **Team** shortcut on your desktop by adding an /SQL parameter to the Target in the shortcut properties. (i.e. "C:\Program Files\Alexsys\Team\Team.exe" /SQL)
2. Start Team.
3. Verify that Team is accessing the SQL database by selecting **Help | System Information** from the TeamView menu and selecting the **Database Tab** (see figure below). You should see information for the SQL server you are accessing.


### System Information - Database Tab - SQL Information Displayed



## Make SQL the Active Database

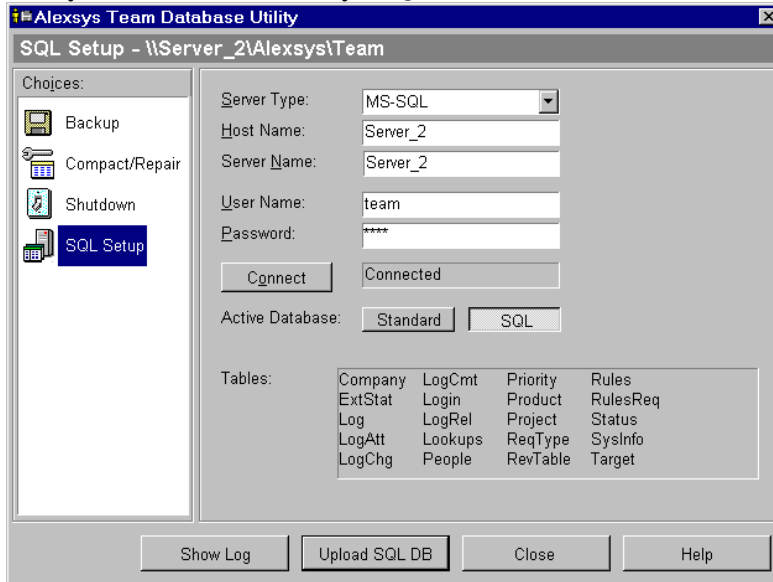
Once your database has been uploaded to your SQL database and you have tested your connection to your SQL database using Team-SQL, you can make SQL the active database to force all users to use Team-SQL.

To make SQL the active database:

1. Select **Admin | Database Utility** from the TeamView or Work Request menus or start  **TEAM Database Utility** from the Alexsys Team Program Group to open the **Alexsys Team Database Utility**. Remember to log off of Team after you open the Database Utility.
2. Select the **SQL Setup** category from the Alexsys Team Database Utility window.
3. Connect to the SQL database by selecting the **Connect** button.

4. Once connected, select **SQL** as the **Active Database** (see figure below).

#### Alexsys Team Database Utility - SQL Active Database



5. Select **Close** to close the Alexsys Team Database Utility.

6. Since SQL is now the active database, you can remove the /SQL argument from any Team shortcuts.